

# Holiday Villas for Rent in Phuket, Thailand

<http://www.phuket-beachvillas.com/properties/>

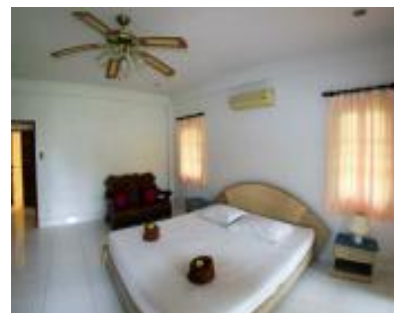


## Resort SH03

Thailand » Phuket » Rawai Beach

| Type              | Ref. Id     | Living Area | Total Area | Price         |
|-------------------|-------------|-------------|------------|---------------|
| Resort / Bungalow | Resort SH03 | 220 sq. m   | 400 sq. m  | 115 USD/night |

| Bedrooms | Bathrooms | Floor/floors | Furnished | Listing Date     |
|----------|-----------|--------------|-----------|------------------|
| 3        | 3         | —/1          | yes       | November 1, 2015 |



## Description

This resort offers a collection of bungalows, surrounding a large pool. We are proud of the quiet and relaxing atmosphere, with views of mountains and big Buddha. The resort is located between Chalong and Rawai on the southern most tip of Phuket island. Plenty of activities are available near by, including elephant trekking, horse riding, fishing, snorkeling and scuba diving to name but a few. **At this page we introduce the 3-bedroom House:** This 3-bedroom house is very quietly located and separated from all other bungalows towards the end of the property. It has 3 bathrooms en suite and a very large and fully covered outside terrace. Each bedroom has a king-sized bed, refrigerator and cable television. All rooms are air-conditioning and ceiling fans are installed. The whole complex has WiFi.

[CLICK HERE to see the 1-BEDROOM HOUSE](#)

[CLICK HERE to see the 2-BEDROOM HOUSE](#)

Located in the heart of Rawai, we are a 10-minute drive from Promthep Cape, Naiharn Beach and Rawai Beach. Offering air-conditioned bungalows, the property is equipped with a pool, free WiFi, and free private parking space on site. The residence is a 30-minute drive from Phuket Town and Patong Beach. Bungalows at Smile House are fitted with tiled flooring and simple decor. Each unit comes with a cable TV and a refrigerator. Shower facilities are included in an en suite bathroom. Guests can enjoy Thai and Western dishes at the restaurant, which opens between 09:00-20:00hrs. Restaurant We have an attractive bar and restaurant with views of big Buddha and mountain scenery. The restaurant caters for breakfasts and light lunches of both Thai and European food. Enjoy your freshly prepared food around the pool, in the privacy of your own bungalow or in the restaurant. Activities Fishing, Pool Table, Cycling, Diving, Horseback Riding, Snorkeling, Massage Food & Drink Bar, Breakfast in the Room, Restaurant with Dining Menu Services Room Service, Car Rental, Airport Shuttle (surcharge), Tour Desk,, ATM on site, Laundry, Daily Housekeeping, Hair/Beauty Salon General Safe, Convenience Store (on site), Air Conditioning, Designated Smoking Area Languages Spoken Thai, English, German Free! WiFi is available in all areas. Free! Free private parking is available on site (reservation is not needed). Children and Extra Beds All children are welcome. Free! One child under 6 years stays free of charge when using existing beds. One older child or adult is charged THB 600 per person per night in an extra bed. The maximum number of extra beds in a room is 1. There is no capacity for cribs in the room. Any type of extra bed or crib is upon request and needs to be confirmed by management. Additional fees are not calculated automatically in the total cost and will have to be paid for separately during your stay. This property only accepts cash payments. A Double Room has one double/full bed and a Twin Room has 2 twin beds. If a room is called Double/Twin, it can be set up for either type. Please make your request for any extra bed/crib during the booking process.

[Click here to see the surrounding of the villa](#)


## Pricing

| Default Price | Cleaning Fee | Deposit | Max. Occupants | Min. Stay |
|---------------|--------------|---------|----------------|-----------|
| 115 USD/night | 0 USD        | 500 USD | 7              | 3 nights  |

## Additional plans

---

| From         | To            | Price         |
|--------------|---------------|---------------|
| January 1st  | January 31st  | 165 USD/night |
| February 1st | April 30th    | 145 USD/night |
| May 1st      | October 31st  | 115 USD/night |
| November 1st | December 1st  | 145 USD/night |
| December 1st | December 31st | 165 USD/night |

|   |   |
|---|---|
| <p><b>Address</b></p> <p>83130 Rawai Beach<br/>Phuket, Thailand</p> |  <p>The map shows the location of Rawai Beach in Phuket, Thailand. A red pin marks the specific location on the coast. The map includes labels for 'Phuket', 'Ko Sire', 'Ko Lon', and various road numbers like 4029, 4233, 4028, 4021, 4022, 4024, and 4129. The Google logo and 'Map data ©2017 Google' are visible at the bottom of the map area.</p> |
|---|---|

### Contact Details

|            |  |
|------------|--|
| Name:      | All Exclusive Arrangements Partn. Ltd.                                     |
| Telephone: | +66812738160   |
| Location:  | Phuket   |
| Languages: | German, Englisch, Dutch, Thai  |
| Website:   | <a href="http://www.phuket-beachvillas.com">www.phuket-beachvillas.com</a> |